



**dock marine**<sup>®</sup>  
SYSTEMS

# SunFlex

Provides the Most Efficient  
Sustainable  
Energy Production

300.DMS.SUNFLEX  
SOLAR FLOATER SYSTEMS\_03-2022

Brought to you by  
(PMS) Polietilen Mamulleri Sanayi  
Ticaret A.Ş.

# Over 43,000 Projects all around the world. More than 29 Years of experience.

● Countries we have done projects    ● Our Manufacturing Site    ● Our Distributors



Dock Marine Systems represent the expertise and responsibility to solve any challenge.

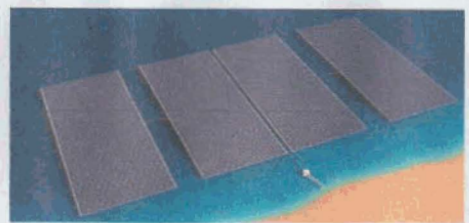
*Water is a dynamic environment, where the importance of engineering is most tangible.*



**Location Analysis**

**Design and Testing**

**Manufacturing**



# The Dock Marine Systems Promise



Dock Marine Systems utilized the latest technology and materials.



Dock Marine System provides full service from concept to completion.



- Every Dock Marine Systems product is constructed for optimal durability and structural integrity.



Dock Marine Systems uses zero-waste manufacturing.

- Dock Marine Systems provides a stable, secure load-bearing the surface of the water.

- Dock Marine floating systems present minimum interference with water circulation and wildlife.

- Dock Marine Systems products adapt smoothly to changing water levels and weather conditions.

- Dock Marine Systems provide a long service life with materials that do not tamper with the environment.



- Dock Marine Systems have the in-house resources to provide timely service in design, manufacturing, delivery, and installation.



Weatherproof, resistant to harsh climate conditions, and exposure to salt water.

Dock Marine Floating platforms are simple to install and easy to rearrange into new layouts to fit new and unique needs.

- Low maintenance, barefoot friendly, and time-tested.

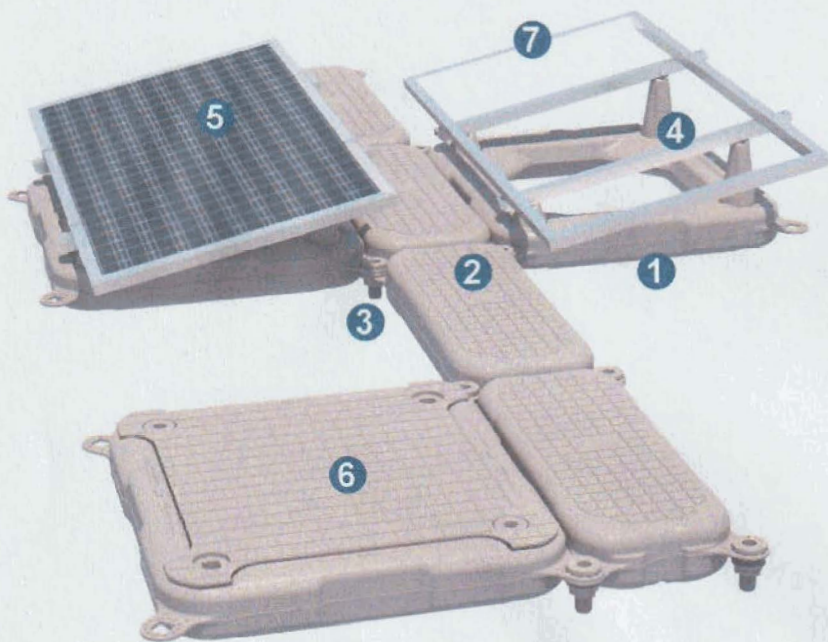


Certifications



We promise to provide the expertise and responsibility to solve any challenge with precision and efficiency.

OUR PROMISE TO YOU



1- Main Float supports to solar panel.

2- Support Float act as a walkway and connector between main floats. Non slip surfaces.

3- Connectors.

4- PV Feet they hold the above the water can provide custom angles and mounting formant.

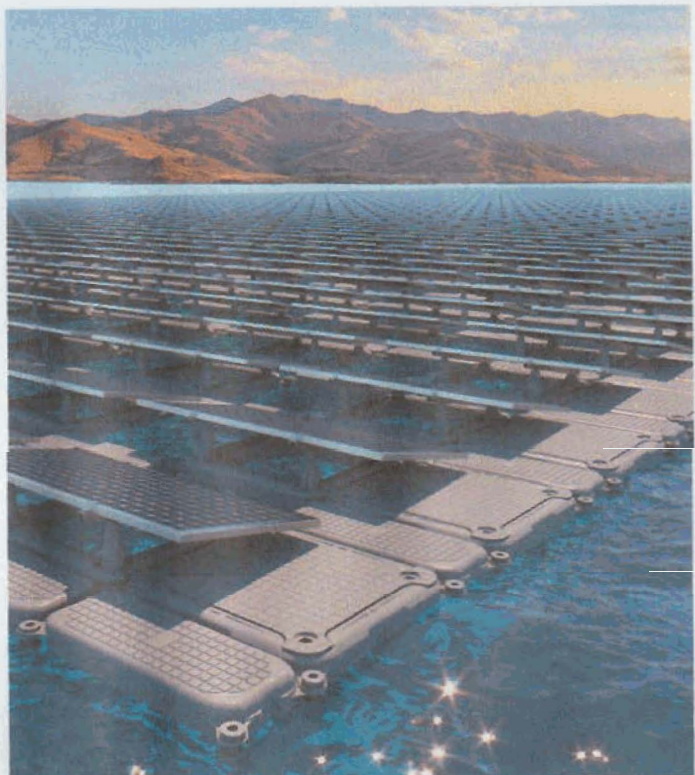
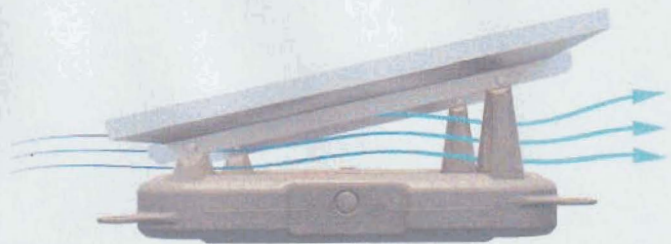
5- Solar PV Modular\*.

6- Main Float Insert Can provide additional rigidity and walkable surface.

7- Standard Framed PV module (60 or 72 cells).

\*Solar PV panel not produced by Dock Marine Systems.

*Hollow core reduces mass and provides air flow for cooling, increasing efficiency.*



# SUNFLEX FEATURES

## More Efficient Power



10+% more efficient energy generation and better cooling than land-based solar systems.

## Save Water



Reduces evaporation, helps to control algae growth and water temperature.

## Conservation



SunFlex is ideal for conserving land by deploying on reservoirs, dams, agriculture & fish ponds, coastal waters, and lakes.

## Structure

Blow molded, UV-protected and high density polyethylene.

## Durability

Blow-molding technology allows the self-floating pieces to flex and adapt as a whole to water conditions. Designed for lifetime service with resistance to all climates.

## Installation

Modularity provides unmatched ease of installation.

## Floats

Self-buoyant

## Connections

Lockable polyethylene bearings for flexibility, noise-free and safe operation.

## Anchoring System

- Neo Flex Mooring with concrete anchor block
- Chain with concrete anchor block or screw piles
- Depending on location, we can design and manufacture more solutions.

## Environmentally Friendly

Constructed of recyclable polyethylene.  
Non water-soluble.  
Minimum interference with water circulation and fish migration.

## Add- on

Gangways, Railings, Cleats, Ladders, Benches, Additional walkways, and other features custom designed per project.

## Repair

Modularity allows easy on-site replacement or repair of damaged components.

## Maintenance

Maintenance-free operation year round.  
Annual cleaning wash with fresh water recommended.

## Certification

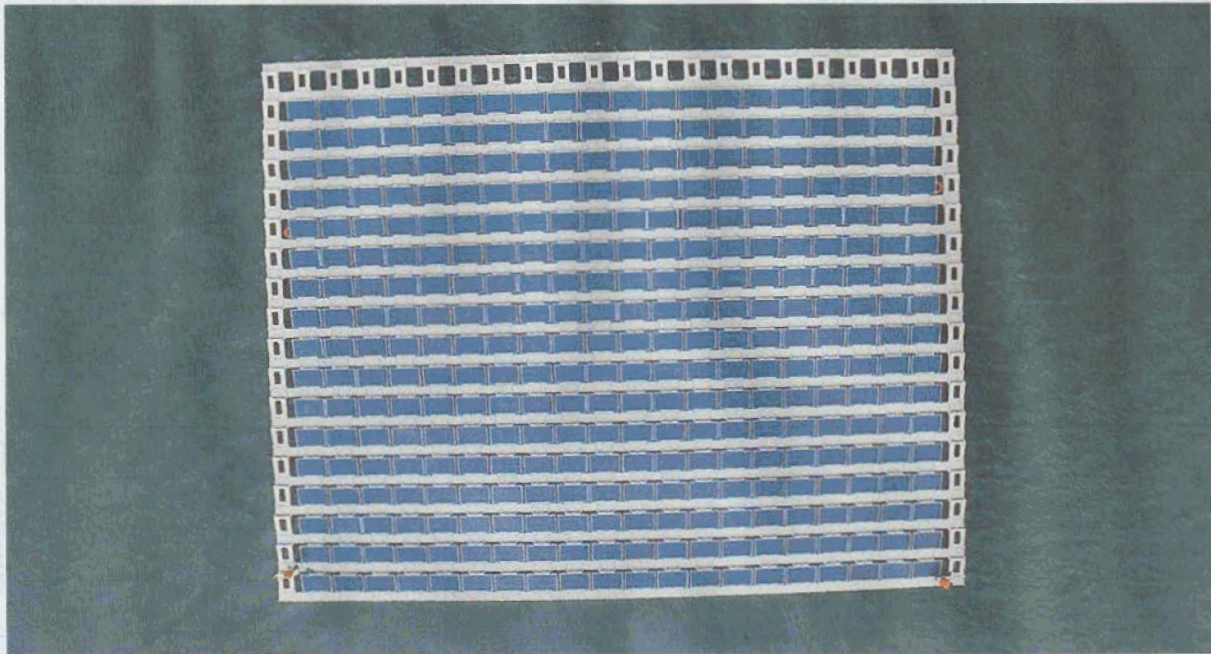
ISO-9001:2015



# SUNFLEX

---





*Dock Marine Systems' proficiency with floating installations extends to solar energy generation. Efficient and durable, the modular design of Dock Marine System's SunFlex solar farms allows any configuration while providing easy maintenance access and scales up or down with ease.*



**SOLAR PANEL FLOATER** • SunFlex Floater System





**SOLAR PANEL FLOATER • SunFlex Floater System**



# NEO FLEX MOORING

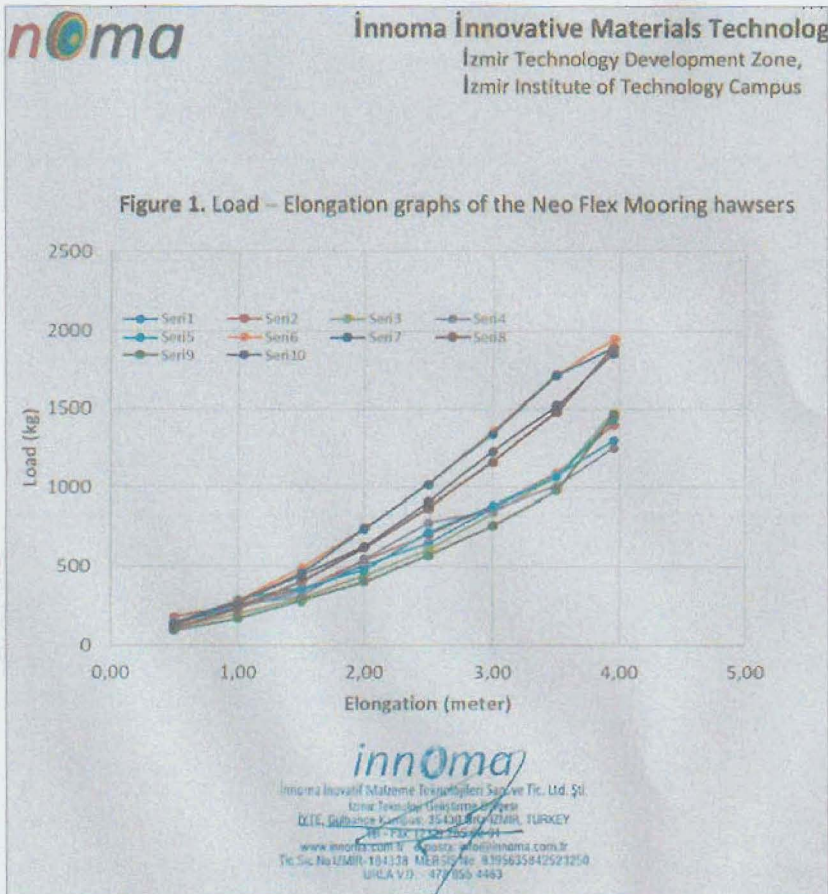


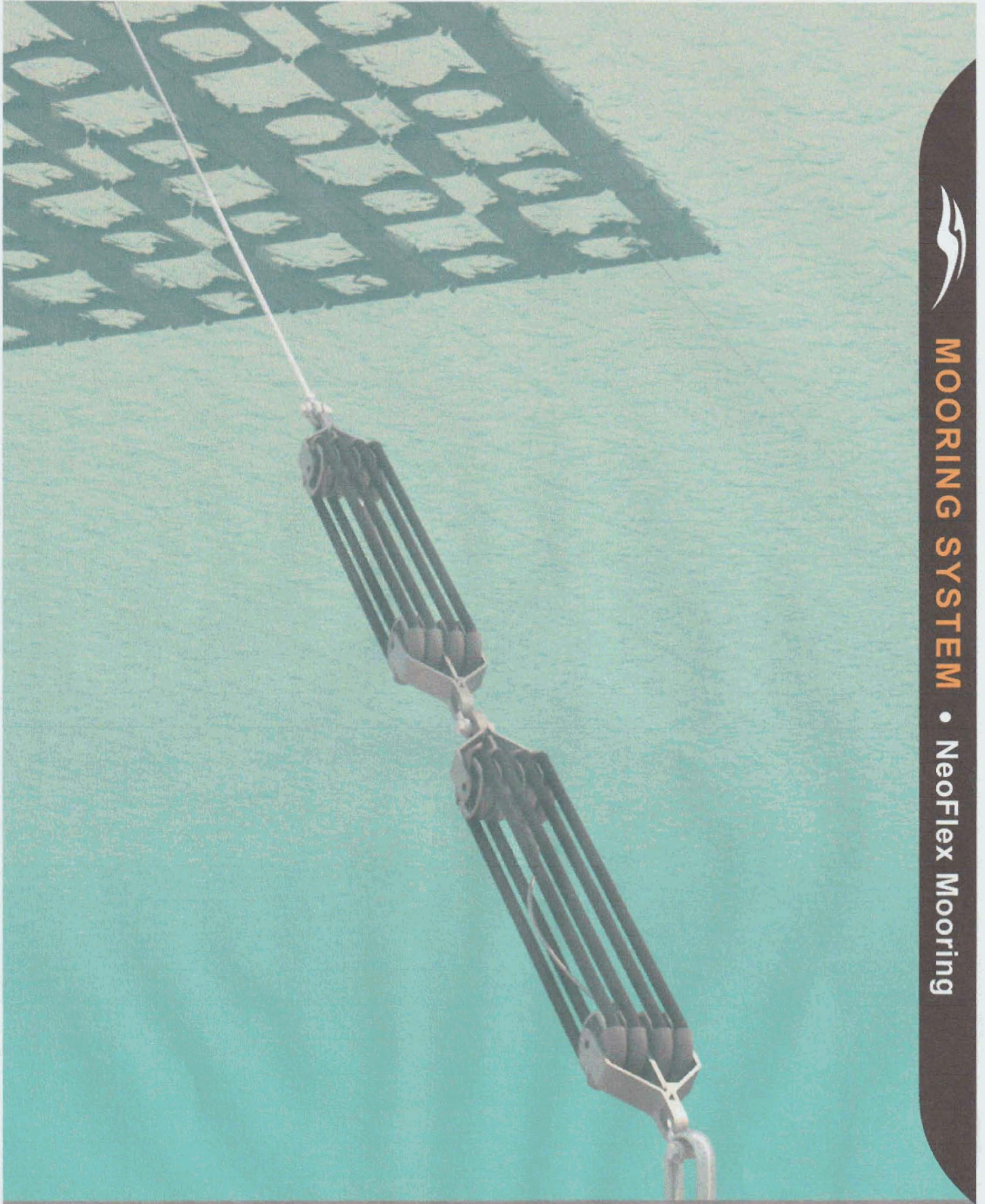
The Neo-Flex mooring system is a cutting edge development in anchoring technology. By keeping constant, steady tension, it reduces the drift to the objects it is anchoring. It also dynamically maintains stability while automatically adjusting to changes in water depth.

Neo-Flex units can be connected in series or parallel, to handle greater vertical changes and higher load capacities.

All Neo-Flex system components are tested prior to construction, and are built from environmentally friendly materials. Neo-Flex rubber strands are highly durable against salt water and the effects of UV light, and are configured according to the needs of the application:

- 1- 2 Strand Neo-Flex Mooring / 1.00 ton capacity
- 2- 3 Strand Neo-Flex Mooring / 2.50 ton capacity
- 3- 4 Strand Neo-Flex Mooring /4.50 ton capacity
- 4- 6 Strand Neo-Flex Mooring / 7.00 ton capacity





**MOORING SYSTEM** • NeoFlex Mooring





# SunFlex

## Photofotaikanlagen

---

**dockmarine gmbH**-A 3435 Neusiedl, Hauptstrasse 13, Tel.+43 2272 72929,  
Mail: [office@dockmarine-europe.eu](mailto:office@dockmarine-europe.eu) Firmenbuch FN 426864t, UID ATU69272057,  
[www.dockmarine-europe.eu](http://www.dockmarine-europe.eu)  
Bank -VB Tulln, IBAN AT304715021100880000, BIC: VBOEATWWNOM